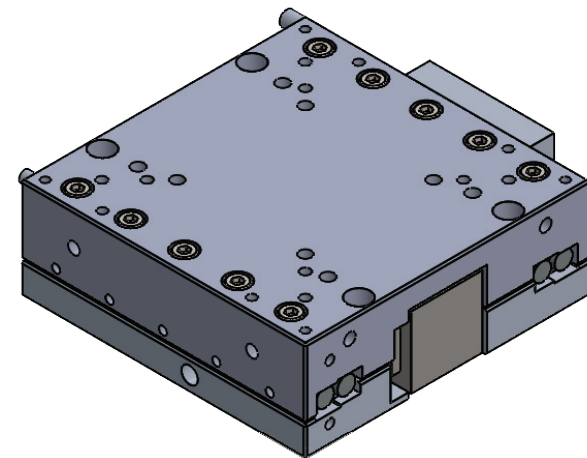
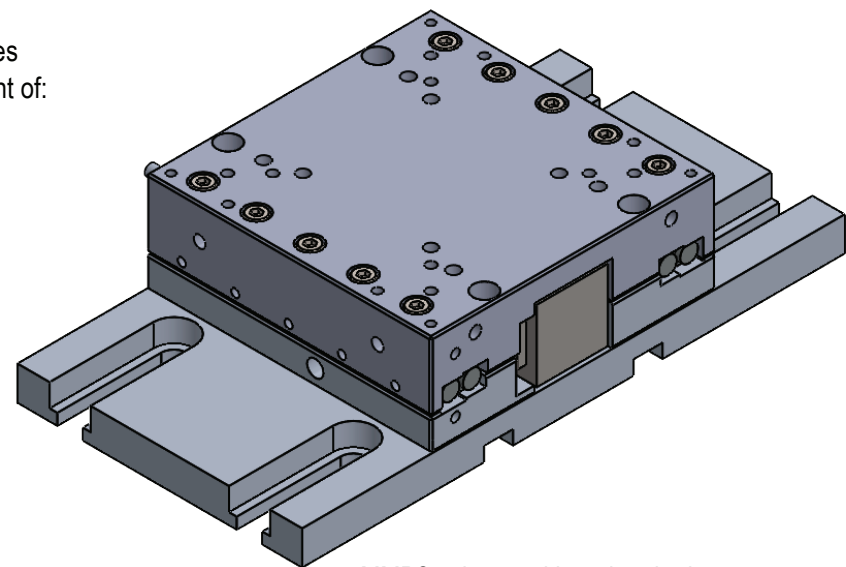


The MMP-25 can be secured from the top using four M3 SHCAP screws, or from the bottom using the four M4 tapped hole.

Additional tapped holes  
allow direct attachment of:  
Nano-HS2/3  
Nano-HS3M  
Nano-3D200  
Nano-MET10/20  
Nano-OP series  
Nano-SPM200



MMP25 shown with optional 50 nm encoder



MMP25 shown with optional adapter  
plate for mounting to Metric or Imperial  
Bread Boards (PN: AC-APMMP)